

# The 2019 ECAR Student & Faculty Technology Surveys

PRESENTED BY:

D. Christopher Brooks • Joseph D. Galanek • Dana C. Gierdowski • Leah Lang



#EDU19

# Student Study

## Total surveys

- 53,475 students
- 160 institutions
- 7 countries
- 38 US states

## 2019 report

- 40,596 student responses
- 118 US institutions

#EDU19

## ECAR Study of Undergraduate Students and Information Technology, 2019



# Faculty Study

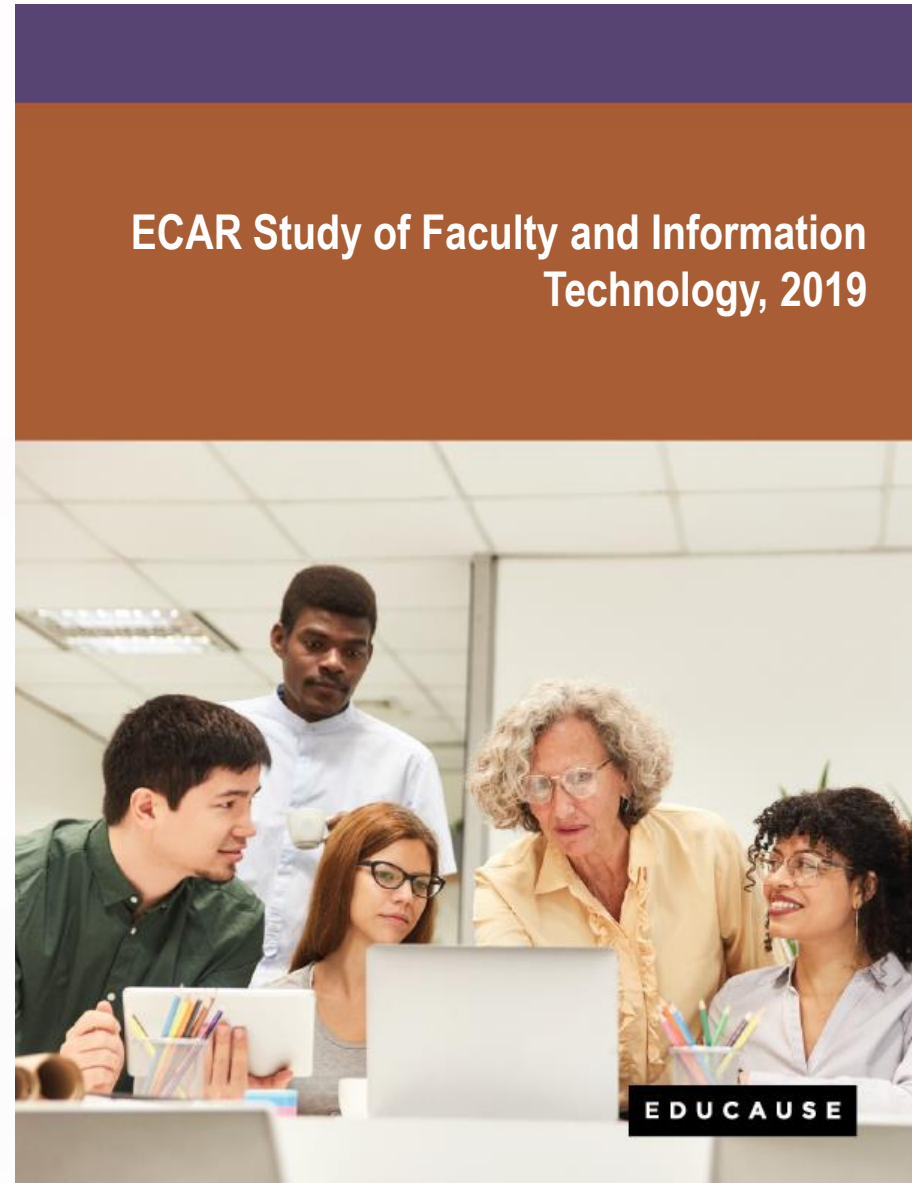
## Total surveys

- 10,078 faculty
- 127 institutions
- 6 countries
- 40 US states

## 2019 report

- 9,521 faculty responses
- 119 US institutions

#EDU19



# 2019 report topics

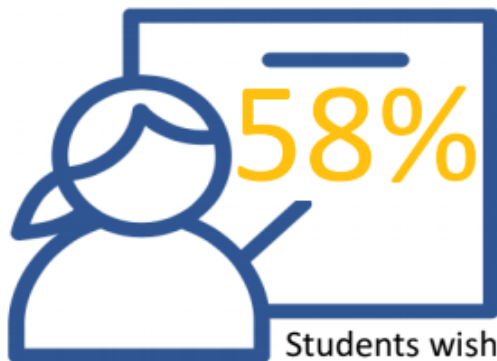
- Learning Environment Preferences
- Student Success Tools
- Technology Experiences
- Technology Use in the Classroom
- Accessibility







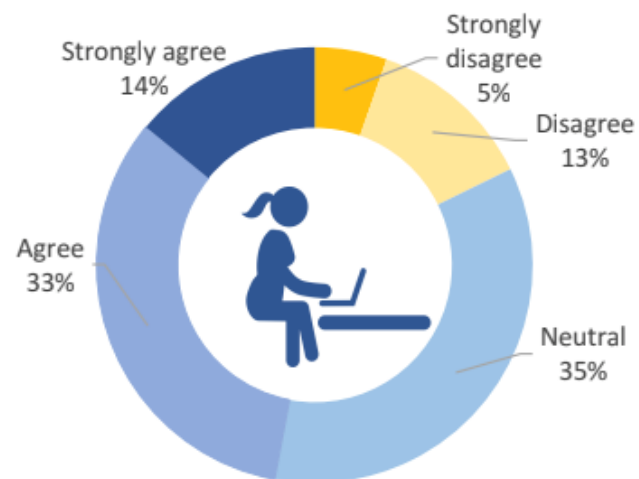
## 2017 EDUCAUSE ETRAC Student Survey



Students wished  
instructors  
used lecture capture



Students wished  
instructors  
used an early-alert  
systems designed  
to catch potential  
academic trouble  
ASAP



"I get more actively involved in  
courses that use technology."

Watching your peers use their awesome student data when you have none like.



#EDU19





# EDUCAUSE Technology Research in the Academic Community benchmark against peer institutions

**EDUCAUSE**

Survey Portal Home ETRAC Surveys Survey Settings

Home > ETRAC Survey > Benchmark Report

View Reports

Module Student Study Year 2019 Institution/Con... 3 of 10426

Selections

Filter and Download

Study Faculty Study Student Study

Year 2019

Download Data

Question Answers

Institution/Con... Values

	AA		BA		DR
	Responses	Percentage of Respondents	Responses	Percentage of Respondents	Responses
What is your age?	4293	100%	2189	100%	22145
18-24	2375	55%	1945	89%	19617
25+	1918	45%	244	11%	2528
Which of the following best describes your class standing during the current academic year?	4293	100%	2189	100%	22145

<https://www.educause.edu/etrac>  
#EDU19







# EDUCAUSE Technology Research in the Academic Community

## 2020 topics



### Student Learning

- *Learning environments*
- *Courseware*
- *Accessibility*



### Student Support and Advising

- *Advising*
- *Student success tools*
- *Early-alerts and digital nudges*



### Student Safety and Well-being

- *Emergency notification*
- *Online harassment*
- *Data privacy*



### Student Technology Services

- *Overall satisfaction*
- *Device connection to Wi-Fi*



## EDUCAUSE Technology Research in the Academic Community dates to remember

Launch ETRAC surveys

Gain access  
to new  
ETRAC data

Sign up for ETRAC

Jan

Feb

Mar

Apr

May

Jun

Jul

Aug

Sep

Oct

Nov

Dec

<https://www.educause.edu/etrac>  
**#EDU19**

You are  
here





# EDUCAUSE Technology Research in the Academic Community sign up now!

The screenshot shows the EDUCAUSE ETRAC Portal dashboard. A modal window is open in the center with the text: "Welcome to the ETRAC Portal, we've changed a few things." and a button "Take a quick tour". Below the modal are two links: "Don't show me this again" and "Maybe next time".

The dashboard includes the following sections:

- Survey Portal:** Home, ETRAC Surveys, Survey Settings.
- Welcome, Leah Lang. EDUCAUSE**
- Student Study / Faculty Study:** Tabs for switching between study types.
- ETRAC STUDENT STUDY TIMELINE:**
  - June 2019: 2019 Data available (Use Data button)
  - October 1, 2019: Sign-up for surveys (Sign Up for 2020 study button)
  - January 13, 2020: Survey links available
  - April 3, 2020: Surveys close
- ETRAC STUDENT STUDY STATUS:**
  - 93 Days Until 2020 links available
  - 1 Administrators Assigned Student Study
  - 1 Planning Form (Revise survey plans link)
- MY ETRAC STUDENT STUDY ROLES:**
  - Role Assignment: Your current access level
  - Manage User Roles button
  - Administrator Status: Request Administrator Access (Not Assigned button)
  - Reviewer Status: Assigned button

<https://www.educause.edu/etrac>  
**#EDU19**



## ECAR Study of Faculty and Information Technology, 2019



## ECAR Study of Undergraduate Students and Information Technology, 2019



#EDU19

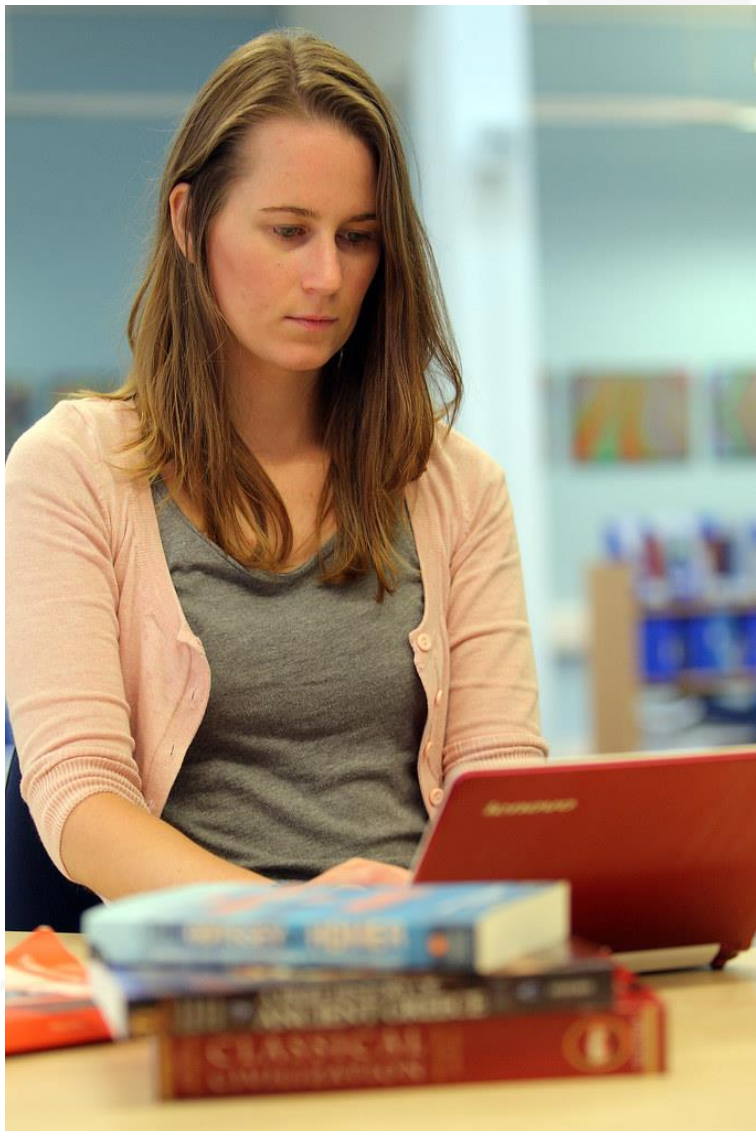




# Learning and Teaching Environment Preferences

#EDU19

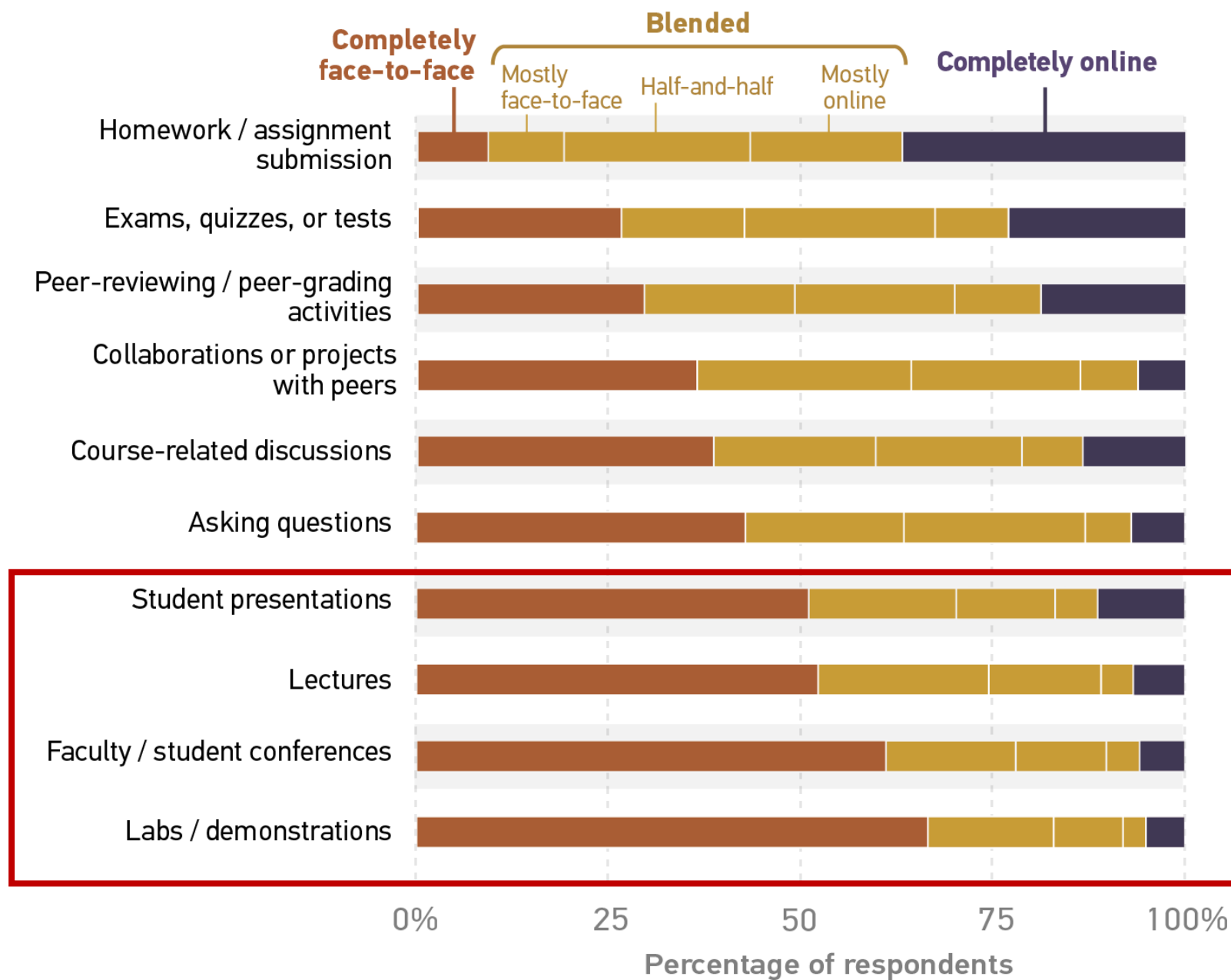




"Online learning" by The Open University (OU) is licensed under [CC BY-NC-ND 2.0](https://creativecommons.org/licenses/by-nc-nd/2.0/)



Sol Messenger Active Learning Center at SUNY Buffalo. [FLEXspace.org](https://flexspace.org)



Student learning environment preferences for specific course-related activities and assignments

# Students said...

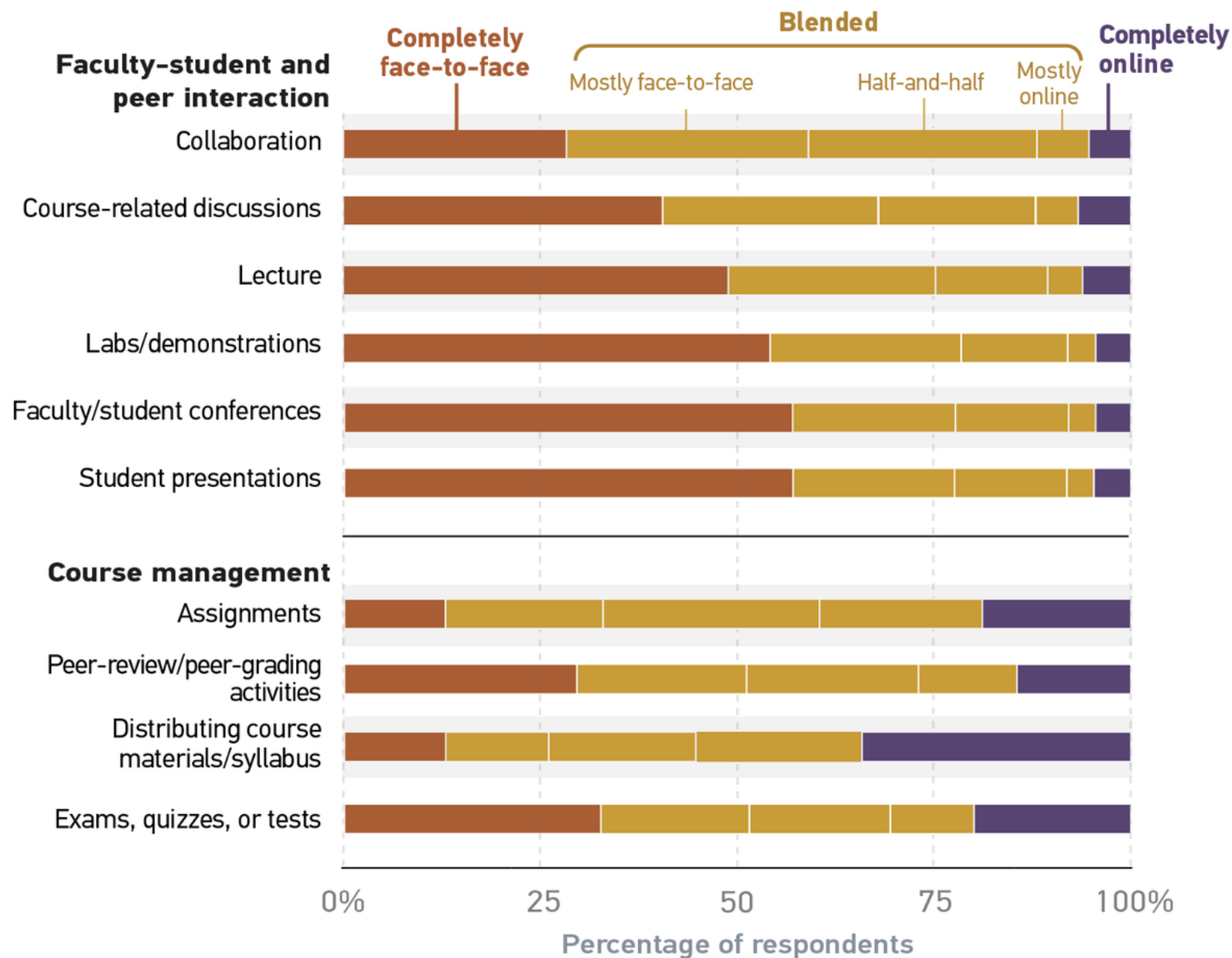
"I think the number one thing I would like to see my instructors using technology for would be engagement with the class. Currently, my instructors tend to use technology almost entirely as a presenting interface which I feel is a missed opportunity given the vast possibilities **technology** poses for engagement."

"I want my professors to stop reading PowerPoint slides word-for-word off of a screen, and to start using the technology at hand to create a different kind of lecture that **will** engage their students in the learning process."

"I'd love for there to be more interactive **polling** and questions during class. Even though I don't like the idea of being in lecture everyday, that would keep me more engaged if the instructors were more dynamic with their tech use."







**Faculty** teaching environment preferences for specific course-related activities and assignments

# Faculty said...

"How to **workshops** for things such as video/sound capture of lectures. "

"Allow colleagues that teach online the majority of the time to get together and **discuss best practices and discuss new ideas along with the instructional designer.**"

"**Give me more time to work on technology in my teaching role.** Between teaching, college service and other professional development, I don't have time to learn what is available, how to use it, and develop content that uses it."



# Recommendations

- Use tech intentionally in class to increase interactivity & engagement in lectures and labs.
- Promote benefits and strategies for engaging in online teaching through mentoring, and the creation of sustainable learning communities.



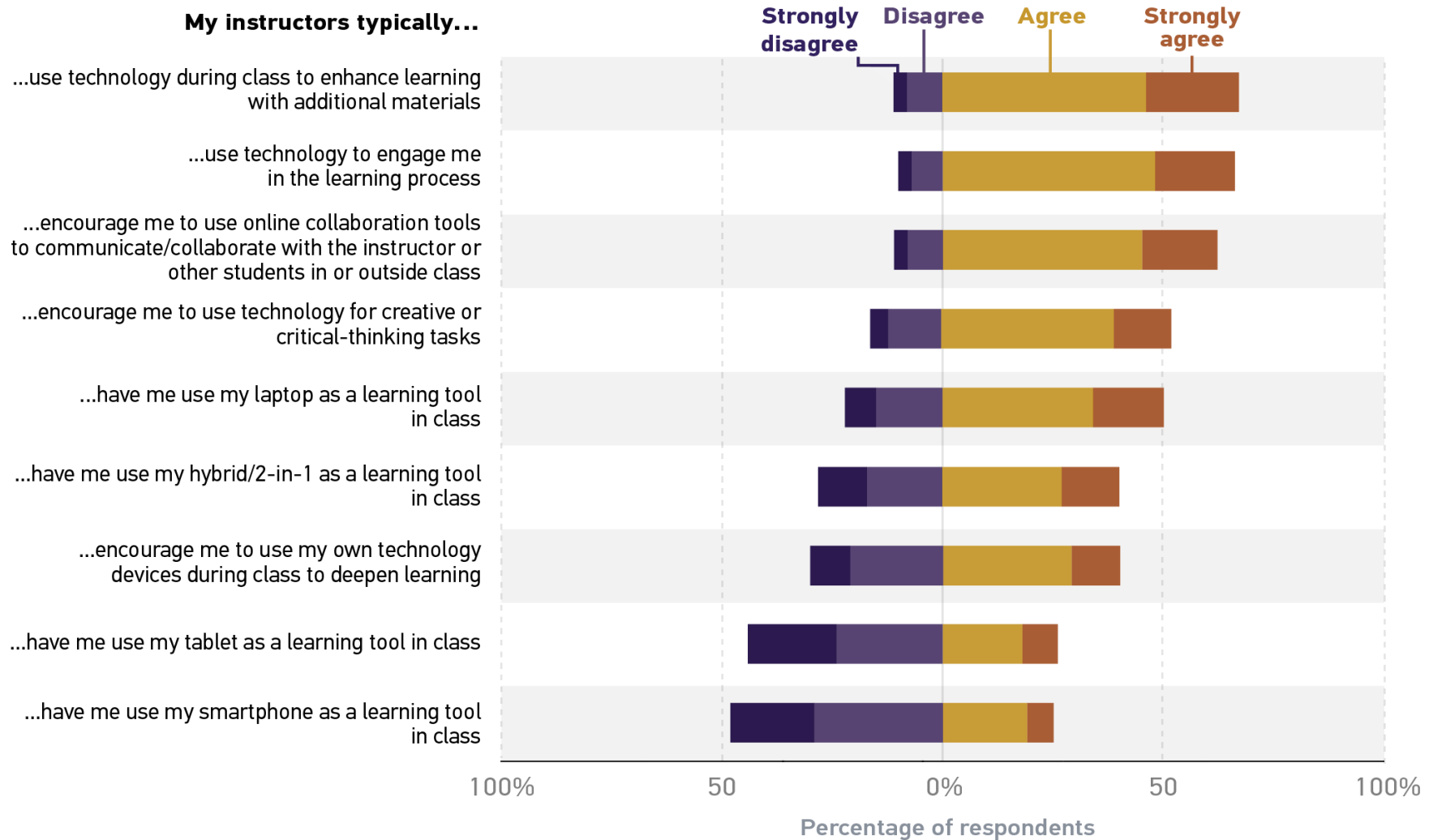
# Technology Use in the Classroom

#EDU19

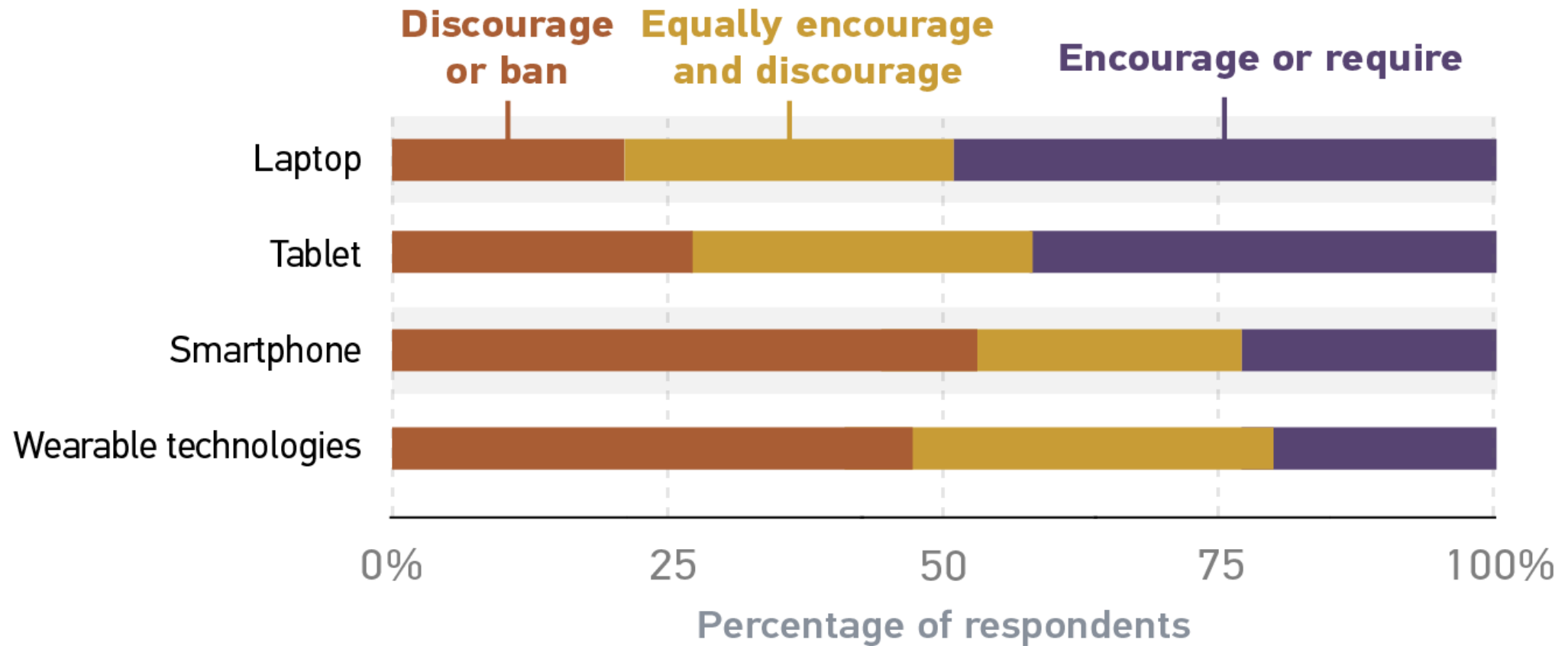




# Students



# Faculty



# Students said...

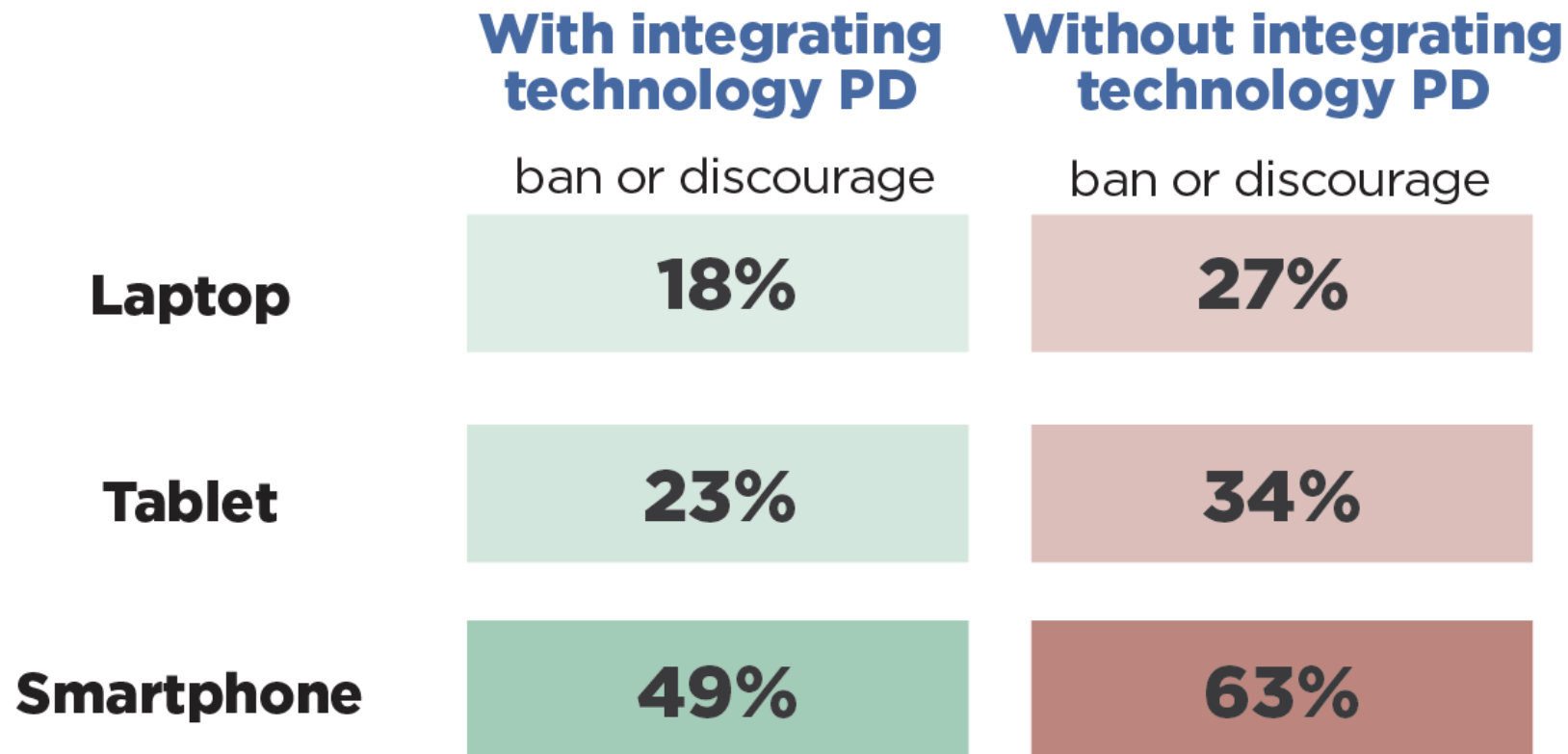
"many of my professors do not allow technology in the classroom. Most of the books I need for class are much cheaper as digital copies, and if I need to bring the book to class, I should be allowed to utilize the technology I have access to."

"I've had a few instructors who were strict on the no-technology during class policy. The majority of my textbooks/readings are on my tablet for easy access, so it was sometimes difficult to participate in class discussions about the readings."

"Many instructors oppose using laptops in class. This is very troublesome for me because most of my textbooks are digital. They effectively prohibit me from using my textbook in class."



# "Require professional development..."





# Recommendations

- Offer faculty alternatives to tech bans.
- Facilitate faculty professional development on technology integration into teaching.

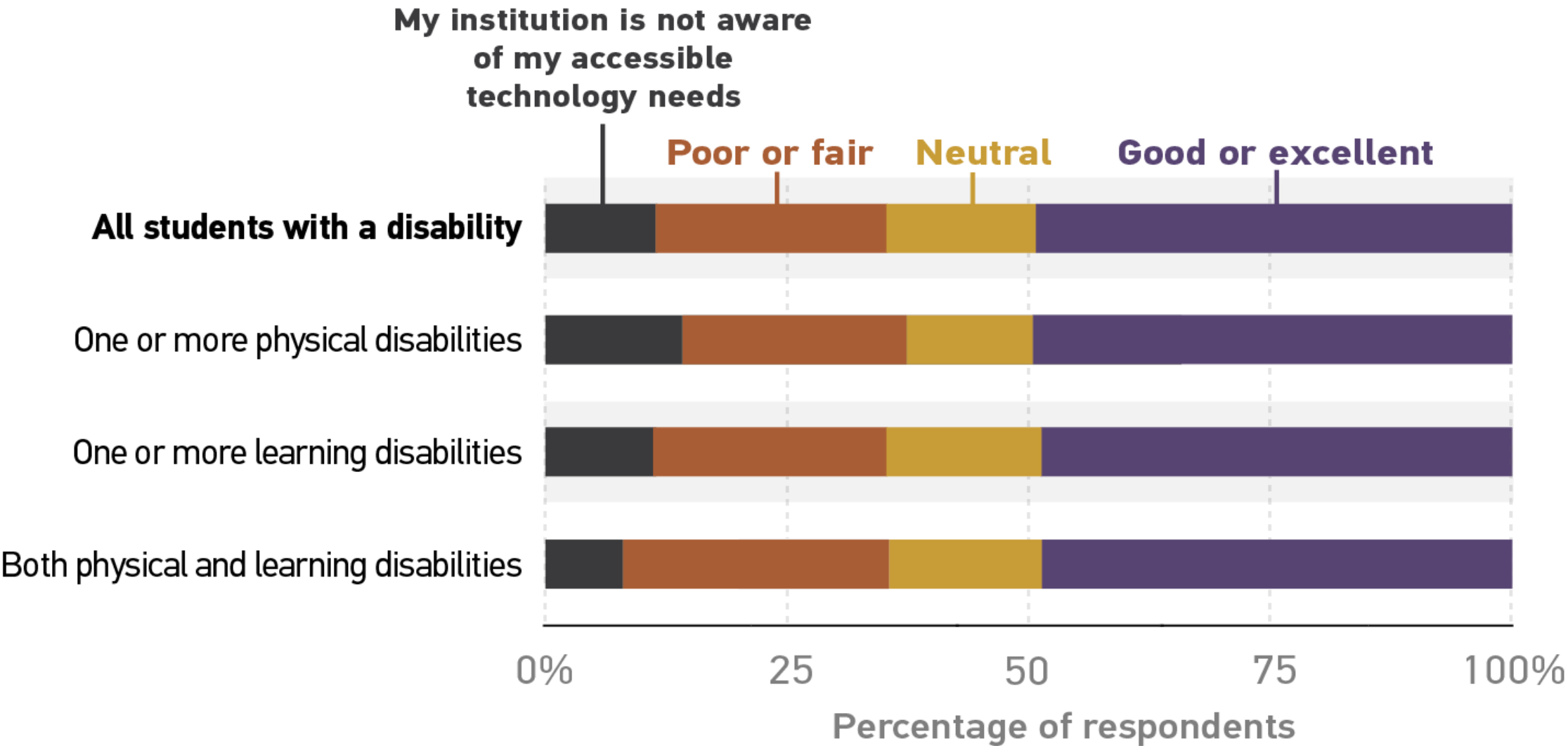


# Accessibility

#EDU19

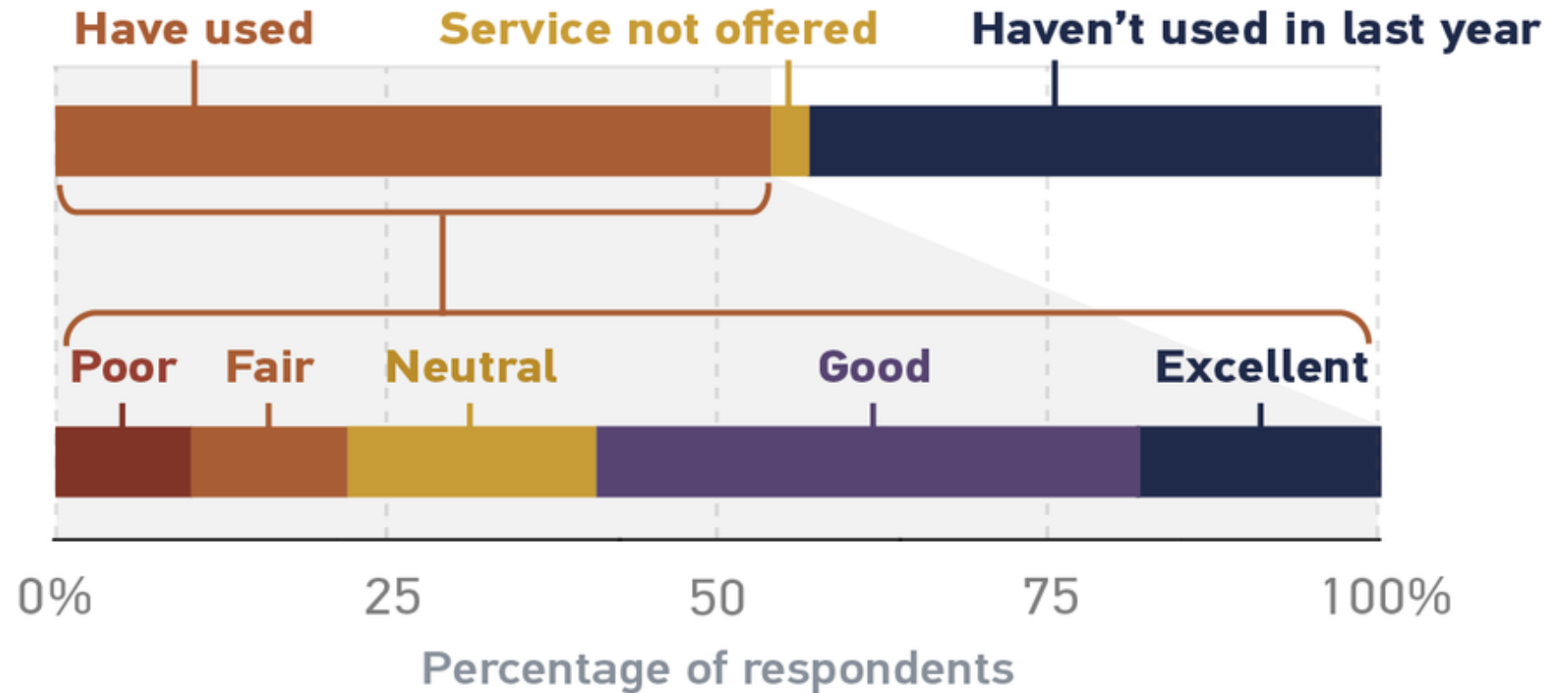


# Students



# Faculty

Faculty support  
ratings for making  
courses accessible  
to students with  
disabilities



# Recommendations

- Partner with units across campus to educate all students on the available accessible technology services and how to request them.
- Increase faculty awareness of student needs and accessibility support services.





# Questions?

#EDU19



# Thank you!



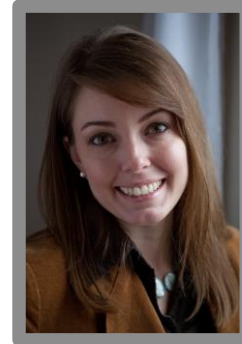
**D. Christopher Brooks**  
[cbrooks@educause.edu](mailto:cbrooks@educause.edu)  
Twitter: @DCBPhDV2



**Joseph D. Galanek**  
[jdgalanek@educause.edu](mailto:jdgalanek@educause.edu)  
Twitter: @josephgalanek



**Dana C. Gierdowski**  
[dgierdowski@educause.edu](mailto:dgierdowski@educause.edu)  
Twitter: @dcgierdo



**Leah Lang**  
[llang@educause.edu](mailto:llang@educause.edu)  
Twitter: [@meahlarie](https://twitter.com/meahlarie)



**ETRAC Website:**

<https://www.educause.edu/ecar/about-ecar/technology-research-academic-community/>



**E-Mail:**

[study@educause.edu](mailto:study@educause.edu)

# Session Evaluations

There are two ways to access the session and presenter evaluations:

1 In the online agenda, click on the “[Evaluate Session](#)” link



2 From the mobile app, click on the session you want from the schedule > then scroll down or click on the associated resources > and the [evaluation](#) will pop up in the list

